


PANEL	DESIGNATION	SIZE
1	132kV BUS ZONE PANEL	800X600
2	132kV MAPETLA FEEDER	800X600
3	132kV DIEPKLOOF FEEDER	800X600
4	132kV PROTEA FEEDER	800X600
5	132kV MOFOLO FEEDER	800X600
6	NSD 45 PANEL	600X540
7	132/11kV TRFR-4 CONTROL PANEL	800X600
8	132/11kV TRFR-3 CONTROL PANEL	800X600
9	132/11kV TRFR-2 CONTROL PANEL	800X600
10	132/11kV TRFR-1 CONTROL PANEL	800X600
11	DC DISTRIBUTION BOARD	800X600
12	AC DISTRIBUTION BOARD	800X600

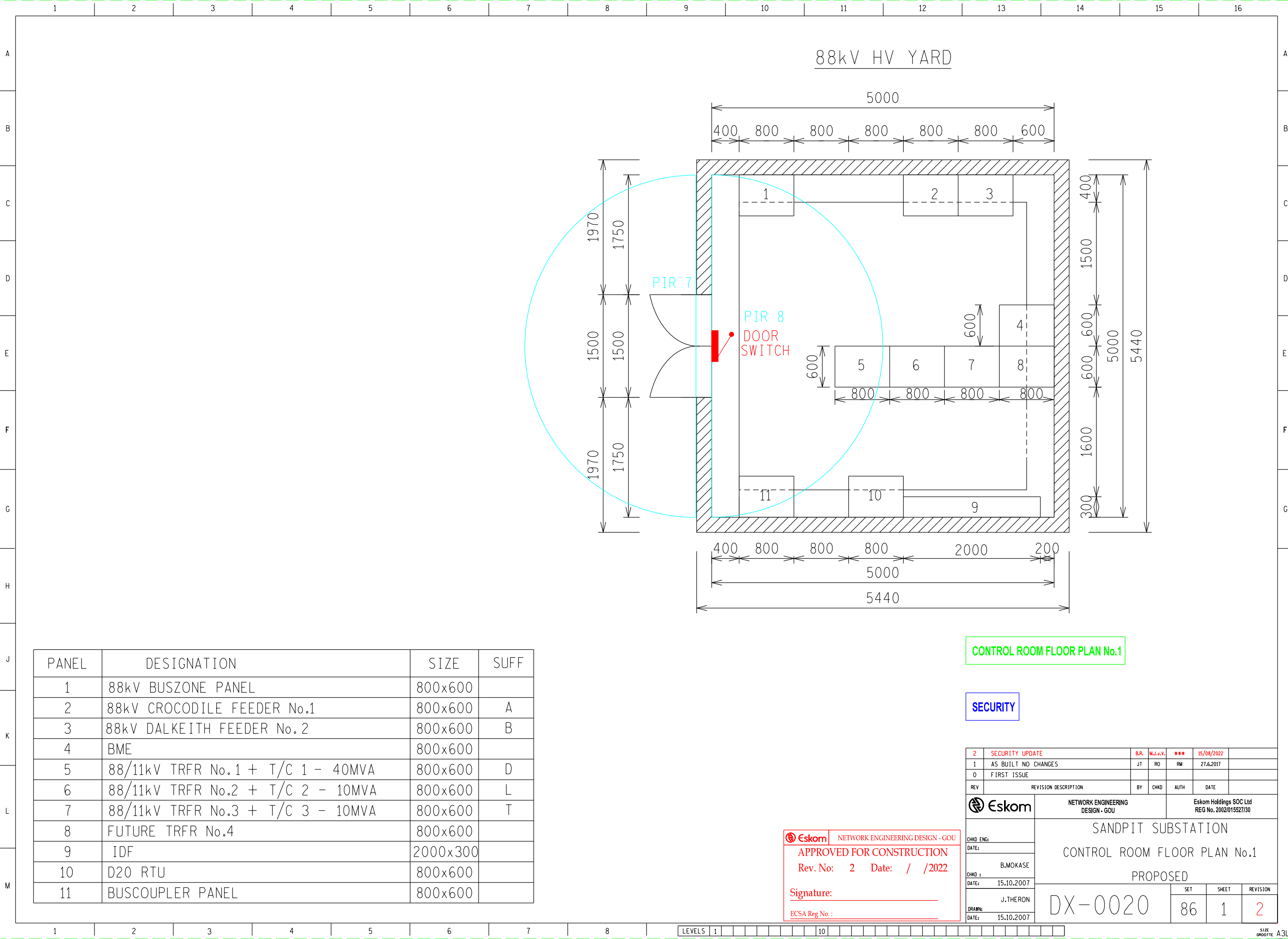
THIS DRAWING HAS BEEN CREATED ON A C.A.D. SYSTEM AND ANY AMENDMENT TO THE DRAWING MUST BE EFFECTED ONLY ON THE SAME C.A.D. SYSTEM

THE C.A.D. REFERENCE NUMBER IS:  
10.18/15959S00.R00

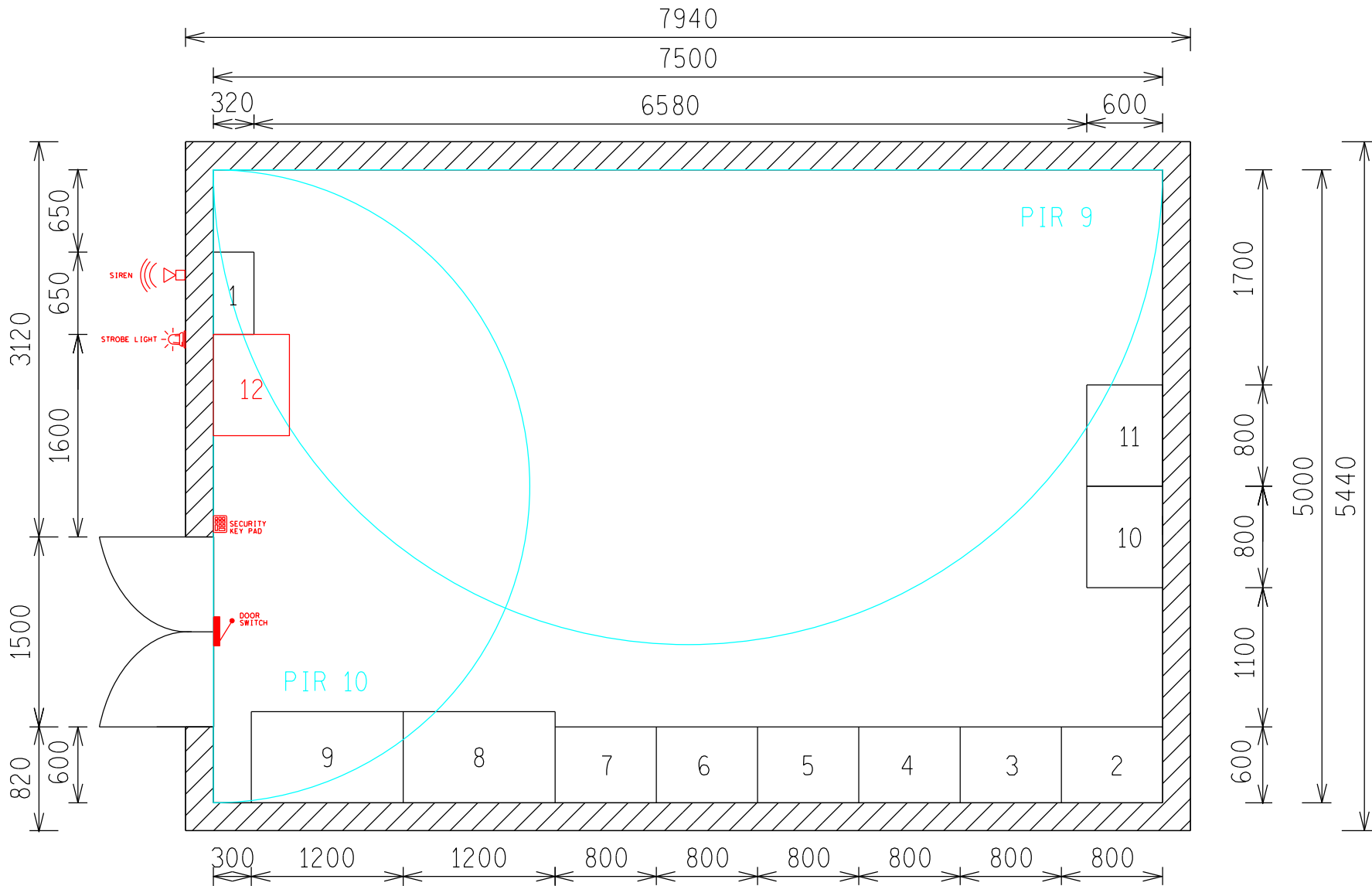
PROJECT WJ7S15100	MASTER SKELETON				FIRST ISSUE / EERSTE UITREIKING					
		0								
		REV	AUTH MAG	DATE DATUM	REVISION/REVISIES		BY DEUR	CHKD NAGES	REFERENCE DRAWINGS VERWYSINGSTEKENINGE	
		INDEX REF/INDEKSVERW								
		C/DR H.O.			<div>DISTRIBUTION CENTRAL REGION</div> <div></div> <div>SIMMERPAN</div>		<div>ESKOM</div> <div>JOHANNESBURG DISTRIBUTOR</div> <div>MOROKA SUBSTATION</div> <div>132kV CONTROL ROOM</div> <div>FLOOR PLAN</div>			
S.ENG										
HEAD DES/ER										
HEAD DES/ER										
DES/ER	LES KOŁODZIEJCZYK	22.5 2003								
	DRAWN GETEKEN	F.WIEHE 22.3.2001	APPROVED K.O.ROTTCHER		AUTHORIZED L.TSHABALALA		10.18/15959		REV 0	
				2.6.2003		26.5.2003				

ESKOM  
JOHANNESBURG DISTRIBUTOR  
MOROKA SUBSTATION  
132kV CONTROL ROOM  
FLOOR PLAN

10.18/15959



PANEL	DESIGNATION	SIZE	SUFF
1	CABLE RACK	650x320	
2	11kV FEEDER BAY-1	800x600	A
	11kV FEEDER BAY-2		B
	11kV FEEDER BAY-3		C
3	11kV FEEDER BAY-6	800x600	E
	11kV FEEDER BAY-7		F
	11kV FEEDER BAY-8		G
4	11kV FEEDER BAY-10	800x600	H
	11kV FEEDER BAY-11		J
	11kV FEEDER BAY-12		K
5	11kV FEEDER BAY-15	800x600	M
	11kV FEEDER BAY-16		N
	11kV FEEDER BAY-17		P
6	11kV FEEDER BAY-19	800x600	Q
	11kV FEEDER BAY-20		R
	11kV FEEDER BAY-21		S
7	11kV FEEDER BAY-24	800x600	U
	11kV FEEDER BAY-25		W
	11kV FEEDER BAY-26		X
8	110V DC BATTERY CABINET	1200x720	
9	110V DC BATTERY CHARGER	1200x720	
10	AC/DC PANEL	800x600	
11	11kV BUSBAR PROTECTION PANEL	800x600	
12	SECURITY PANEL	800x600	



CONTROL ROOM FLOOR PLAN No. 2

SECURITY


NETWORK ENGINEERING DESIGN - GOU

APPROVED FOR CONSTRUCTION

Rev. No: 2 Date: / /2022

Signature: \_\_\_\_\_

ECSA Reg No.: \_\_\_\_\_

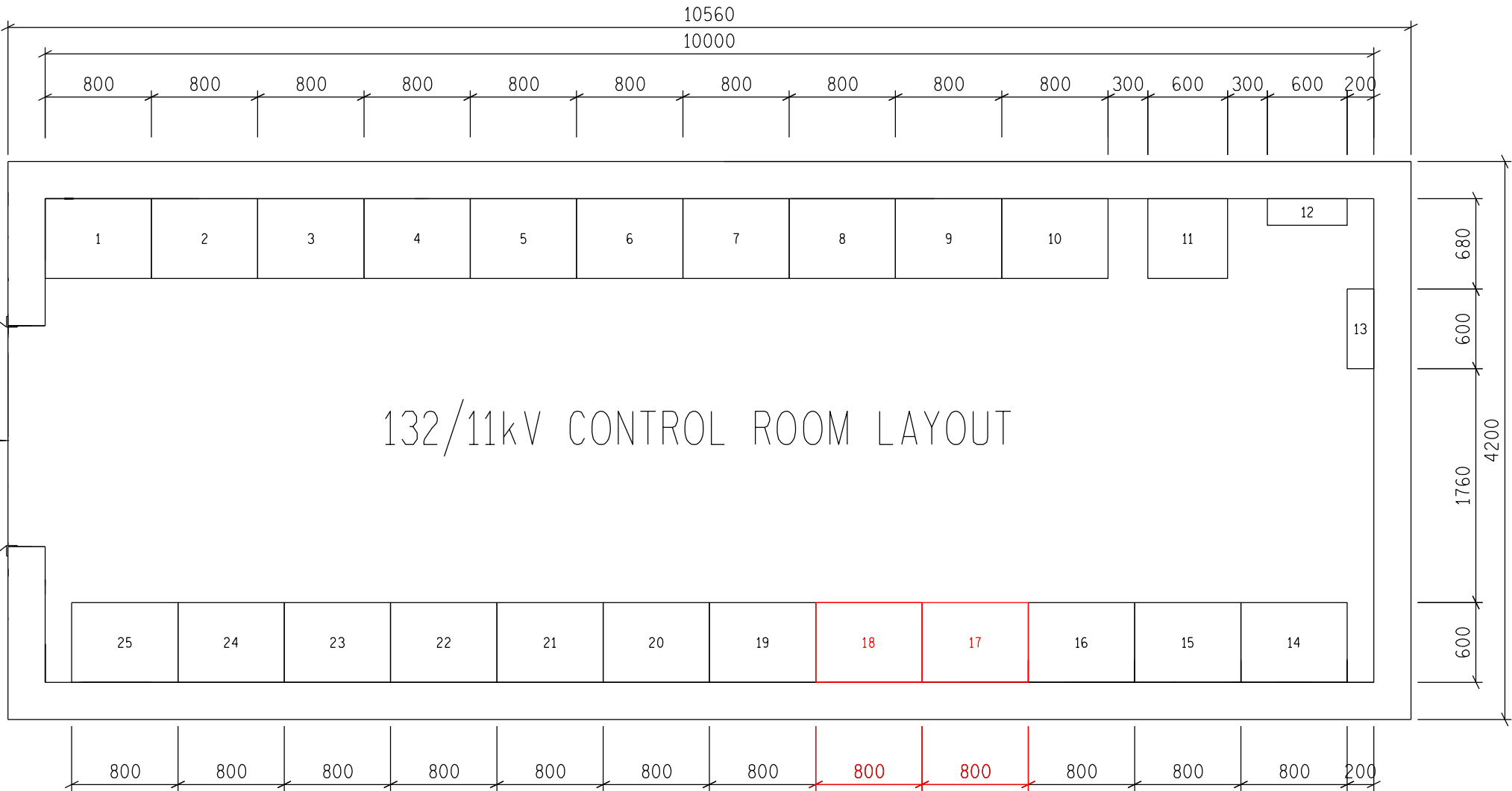
2	SECURITY UPGRADE	B.R.	M.J.v.V.	***	15/08/2022	
1	AS BUILT NO CHANGES	JT	RO	RM	27.6.2017	
0	FIRST ISSUE					
REV	REVISION DESCRIPTION	BY	CHKD	AUTH	DATE	
		NETWORK ENGINEERING DESIGN - GOU			Eskom Holdings SOC Ltd REG No. 2002/015527/30	
NIZAM AMOD		SANDPIT SUBSTATION  CONTROL ROOM FLOOR PLAN No. 2  PROPOSED				
CHKD ENG:						
DATE: 4.4.08						
B.MOKASE						
CHKD :						
DATE: 15.10.2007						
J.THERON						
DRAWN:		DX-0020		SET	SHEET	REVISION
DATE: 15.10.2007				87	1	2



PROPOSED

PANEL	DESCRIPTION	SIZE
1	11kV FEEDER PANEL 1	800x600
2	11kV FEEDER PANEL 2	800x600
3	11kV FEEDER PANEL 3	800x600
4	11kV FEEDER PANEL 4	800x600
5	11kV FEEDER PANEL 5	600x600
6	11kV FEEDER PANEL 6	800x600
7	METERING PANEL 1	800x600
8	METERING PANEL 2	800x600
9	METERING PANEL 3	800x600
10	D20 RTU	800x600
11	IDF	400x400
12	ALARM SYSTEM	400x200
13	TELKOM	800x600
14	110V VDC DC CHARGER	800x600
15	AC/DC PANEL	800x600
16	BME	800x600
17	NESTLE 11kV FEEDER BREAKER / UNICA IRON & STEEL 11kV FEEDWR	800x600
18	11kV STATS METERING PANEL 4	800x600
19	METERING PANEL	800x600
20	132kV BUS ZONE PANEL	800x600
21	TRANSFORMER 4 132/11kV	800x600
22	TRANSFORMER 2 132/11kV	800x600
23	TRANSFORMER 1 132/11kV	800x600
24	PELLY 132kV BREAKER	800x600
25	TEMBA MAIN 132kV FEEDER 1	800x600

132/11kV CONTROL ROOM LAYOUT



CHECKED BUT NOT FINAL  
09MAY22

NETWORK ENGINEERING DESIGN - GOU

APPROVED FOR CONSTRUCTION


Rev. No: 2 Date: / /2022

Signature: \_\_\_\_\_

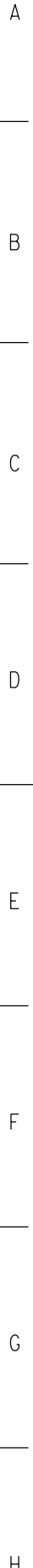
ECSA Reg No.: \_\_\_\_\_

SCALE 1 : 300

THIS DRAWING IS THE PROPERTY OF ESKOM

2	INSTALLING NEW PANEL OF UNICA IRON & STEEL 11kV FEEDER	NP					
1	AS BUILT/LIVE	NP					
REV	REVISION DESCRIPTION	BY	CHKD	AUTH	DATE		
		NETWORK ENGINEERING DESIGN - GOU			Eskom Holdings SOC Ltd REG No. 2002/015527/30		
CHKD ENG:		BABELEGI  132/11kV SUBSTATION  CONTROL ROOM LAYOUT					
DATE:							
R. MKETI							
CHKD :							
DATE: 09/05/2022		DX-4005			SET	SHEET	REVISION
N. PRETORIUS					86	1	2
DRAWN:							
DATE: 09/05/2022							

A
B
C
D
E
F
G
H



F
G
H

G  
—  
H